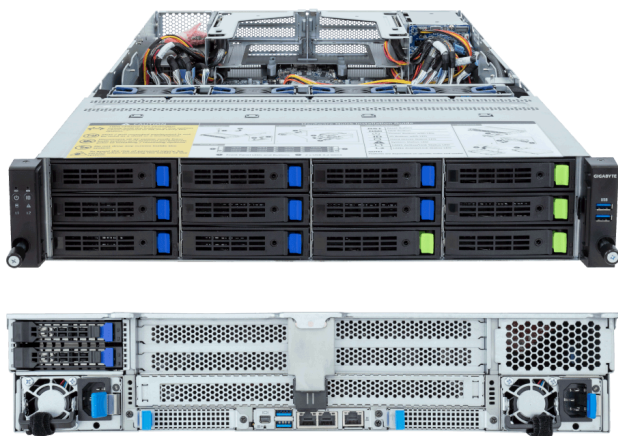


R283-Z95-AAD1 (Rev. 3.x)

Rack Server - AMD EPYC™ 9005/9004 Server Processors -
2U DP 12+2-Bay Gen5 NVMe/SATA/SAS-4 with expander Platinum



Key Features

- Dual AMD EPYC™ 9005/9004 Server Processors
- 12-Channel DDR5 RDIMM per CPU with 24 x DIMMs
- 2 x 1 Gb/s LAN ports via Intel® I350-AM2
- 4 x 3.5"/2.5" Gen5 NVMe/SATA/SAS-4 hot-swap bays
- 8 x 3.5"/2.5" SATA/SAS-4 hot-swap bays
- 2 x 2.5" SATA/SAS-4 hot-swap bays on the rear side
- Onboard 24 Gb/s SAS-4 expander
- 3 x M.2 slots with PCIe Gen3 x4 and x2
- 5 x FHHL PCIe x16 slots with Gen5 x16 lanes
- 2 x OCP NIC 3.0 PCIe Gen5 x16 slots
- Dual 1600 W 80 PLUS Platinum redundant power supplies

Applications

Networks Server, Servers for Hybrid/Private Cloud...

Specification

Dimensions	2U (W438 x H87.5 x D815 mm)	RAID	Require RAID add-in cards
Motherboard	MZ93-FS1	PCIe Expansion Slots	5 x FHHL x16 (Gen5 x16) 2 x OCP NIC 3.0 (Gen5 x16), Support NCSI
CPU	AMD EPYC™ 9005 Server Processors AMD EPYC™ 9004 Server Processors Dual processors - cTDP up to 400 W (-ACD1) - cTDP up to 500 W (-ADD1)	I/O Ports	Front: 2 x USB 3.2 Gen1 Rear: 2 x USB 3.2 Gen1, 1 x Mini-DP, 2 x RJ45, 1 x MLAN
OS Compatibility	OS Support List	Backplane Board	Front - CBP21C4: PCIe Gen5 x4 or SATA 6 Gb/s or SAS-4 24 Gb/s Rear - CBP2025: SATA 6 Gb/s or SAS-4 24 Gb/s
Socket	2 x LGA 6096 (Socket SP5)	TPM	1 x TPM header (SPI), Optional TPM 2.0 kit: CTM010
Chipset	System on Chip	Power Supply	Dual 1600 W 80 PLUS Platinum redundant power supplies AC Input: 100-240 V
Memory	12-Channel DDR5 RDIMM, 24 x DIMMs [EPYC 9005] Up to 6400 MT/s [EPYC 9004] Up to 4800 MT/s	System Management	ASPEED® AST2600 Baseboard Management Controller GIGABYTE Management Console web interface
LAN	2 x 1 Gb/s LAN (1 x Intel® I350-AM2), Support NCSI 1 x 10/100/1000 Mb/s Management LAN	System Fans	4 x 80x80x38mm
Video	Integrated in ASPEED® AST2600 - 1 x Mini-DP	Operating Properties	Operating: 10°C to 35°C, 8% to 80% (non-condensing) Non-operating: -40°C to 60°C, 20% to 95% (non-condensing)
Storage	Front hot-swap: 4 x 3.5"/2.5" Gen5 NVMe/SATA/SAS-4 [1] 8 x 3.5"/2.5" SATA/SAS-4 [1] Rear hot-swap: 2 x 2.5" SATA/SAS-4 [1] Internal M.2: 2 x M.2 (2280/22110), PCIe Gen3 x4 1 x M.2 (2280/22110), PCIe Gen3 x2	Packaging Content	1 x R283-Z95-AAD1 2 x CPU heatsinks 1 x Mini-DP to D-Sub cable 1 x 2-Section Rail kit
	[1] Storage card is required to enable SATA and SAS drives. - Broadcom SAS4x32 expander - Bandwidth: SATA 6 Gb/s or SAS-4 24 Gb/s per port	Ordering Part Numbers	Up to 400 W CPU: 6NR283Z95DR000ACD1* Up to 500 W CPU: 6NR283Z95DR000ADD1*
		Optional Parts	- 3-Section Rail kit (Supports CMA): 25HB2-A56121-KOR - Cable Management Arm: 25HB1-R18300-KOR



Learn more at: <https://www.gigabyte.com/Enterprise>

* All specifications are subject to change without notice. Please visit our website for the latest information.

* All trademarks and logos are the properties of their respective holders.

© 2026 Giga Computing Technology Co., Ltd. All rights reserved.

Last updated: Jun 23, 2026

Designed by

